

**LISMORE
FLYING**



**MODEL
CLUB**

NEWSLETTER

JANUARY 2017.



To all LMFC members.



The next monthly meeting
TO BE HELD AT THE FIELD ON
SUNDAY, February 5th.
The usual 9.00A.M. Start.
The first of the year so let's make it big.

News in brief.

Another year and a long, hot summer so far. 2017 is shaping up as a momentous year for the LMFC. Our new field is greening up and the field committee have put in many hours getting the concrete slab formed and poured, with the shed already partly erected, and a sound, lock up gate is in place on the entry road. A round of applause for those boys.

While it will be a sad day when we have our last fly at the existing field, the new area has enormous potential. Many of the club members are looking ahead to new models and more events at the Wyrallah Rd. field.

The lock up area will have a canteen/servery section and room for the BBQ out of the weather. Lots of space and a new outlook is always welcome, and with the very welcome news of a grant, via Thomas George, a few more facilities will be added as time allows.



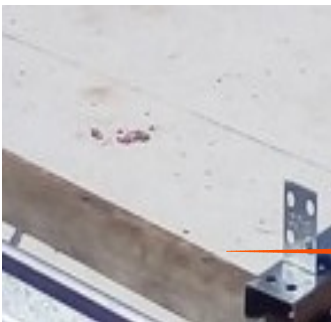
The field crew, hard at it preparing for the concrete.

Despite some rain at the time, the pour went ahead successfully.



The new field will bring our flying a little closer to the approach line for Lismore airfield so members are reminded that our ceiling for models of 400 feet, should be observed, not just for the safety of all

concerned, but to allow the club to continue flying without further restriction or attention from authorities.



It was in the mid 30s when I took this picture and the field committee were hard at work getting the lock-up shed put up. (The small stain seen on the concrete has been attributed to Craig and his coffee.)



Thanks to the expertise of Jamie Zambelli, the erection went fairly smoothly, even with Craig's "help".



This picture shows the first sheet being installed.





Well done to those men.





The concrete surrounds are well finished and very tidy.



Looking back from the runway, now much greener.



2016 Christmas crowd enjoying the clear day and pleasant company.

The December meeting line up showing about a half of the planes that were brought along for the day.





**These guinea pigs were maiden
today. Flitetest laser-cut kits from
foam board with waterproof paper
backing, twin 1000kv motors,
2450 3s batteries. They flew well
although the nose wheel design
needs work.**

**Plenty of activity over the holiday
break despite some very hot
weather. Although mostly the usual
members have been flying, a few
brought along a visitor or two for
some fun. A great way to add to the
membership list as well.**



Here Warren explains to his grand son a bit about his model. Turns out the young bloke flew like a veteran after a very short time.



Well, it's what they do with horses.



Julio Santander's Zlin50 electric. Very sleek in the air.

James and Greg Spencer have been sorting their newest creation, the EYECATCHER, a lovely traditional Balsa build up kit. The model has taken a little while to sort but flies beautifully and has a real presence in the air.



Greg checks control surface movement and direction.

Here, James and Greg await the right breeze before the Eyecatcher's maiden launch.





**In her natural element, the Eyecatcher lives up to her name.
Well done James and Greg.**



*Always remember.....
A day without sunshine is like, well, night.*





On most days you'll find Neil helping out with a tyro or returning pilot. Here he offers a little advice and support to Trevor as Trev executes a few, more advanced manoeuvres.



Paul Tracey has learnt to fly under Neil's careful eye.



Nigel Virtue with his Druine Turbulent scale. Electric powered



Above is the real thing on the left and Nigel's model on the right.



Check out.....
willyweather.com.au
uv index for Lismore,
before you go frying/flying.



Coffs Harbour
Are hosting their annual

SCALE RALLY

&

Swap & Sell

17-18-19th Feb 2017

10 categories to choose from.

Flying all week-end.

\$25.00 one off fee, No matter how many planes you bring.

Food & cold drinks all week-end

Registration starts 9am, Fri 17

MAAA pilots only, large model certificates will be checked

Field located 16 km north of Coffs harbour at Coffs Clay Target Club.
For more information contact: **Martin Cochrane 02 66582364**

Mob 0448383125 / 0423691150

This event is for radio controlled fixed wing/powerd aircraft

The Lismore Model Flying club newsletter is a publication of the Lismore Model Flying Club (LMFC). The club membership assumes no responsibility for any information contained herein. Unless otherwise stated, maintenance and/or modification procedures herein are not "Factory Approved" and their use may void manufacturer warranties. Ideas and opinions are those of the contributors, and no authentication or approval is implied by the editors, publishers or the LMFC, who assume no liability for the information contained herein. So there!